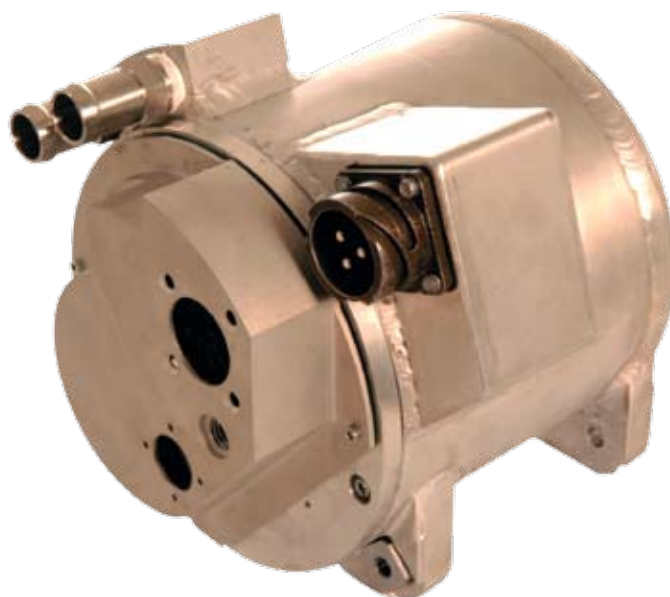


High-power alternator for hybrid vehicle



Dedicated to the electric equipment of hybrid vehicles, this set is used to start the vehicle's thermal motor and to supply the electric energy for battery loading (alternator and starter function).

CHARACTERISTICS

- Wound-rotor synchronous alternator type machine
- Cooling by glycol water
- Instrumentation: temperature probe / absolute position sensor

SPECIFICATIONS

MECHANICAL

Motor dimensions	L=190mm; Diam.=161mm
Motor weight	13kg
Bearings	Ceramic bearings

ELECTRICAL

Alternator power	6kW
Maximum torque	40N.m.
Speed	0 to 18000rpm
Input voltage	$250V_{DC} \leq U \leq 350V_{DC}$

PROTECTION

Environmental	IP65
---------------	------

Data are given by way of illustration and are liable to be modified without notice